

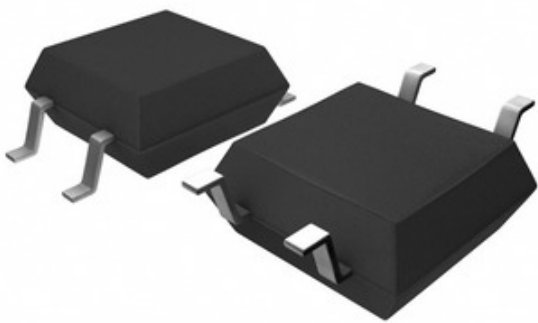


CEL (California Eastern

PS720C-1A-A

Part Number:	PS720C-1A-A
Fabrikant / Brand:	CEL (California Eastern Laboratories)
Produkt beschreibung	SSR RELAY SPST-NO 1.25A 0-60V
Datebanken:	1.PS720C-1A-A.pdf 2.PS720C-1A-A.pdf
RoHs Status	Bleif gratis / RoHS kompatibel
Ship From	Hong Kong
Shipment Way	DHL/Fedex/TNT/UPS/EMS

Laboratories)



UFRO FIR ZITAT

Bild kann Representatioun sinn. Kuckt Spezifikatioune fir Produktdetailer.

Spezifikatioune vun PS720C-1A-A

PART NUMBER	PS720C-1A-A
HIERSTELLER	CEL (California Eastern Laboratories)
BESCHREIWUNG	SSR RELAY SPST-NO 1.25A 0-60V
BLEIF FREE STATUS / ROHS STATUS	Bleif gratis / RoHS kompatibel
DATENLABEL	1.PS720C-1A-A.pdf 2.PS720C-1A-A.pdf
VOLTAGE - LOAD	0V ~ 60V
VOLTAGE - INPUT	1.1VDC
TERMINATIOUNSTIL	Gull Wing
SUPPLIER DEVICE PACKAGE	4-SOP (2.54mm)
SERIE	PS, OCMOS
VERPAKUNG	Tube
PACKAGE / CASE	4-SOP (0.173", 4.40mm)
AUSGÄNGEGKEET	AC, DC
ANER NAMES	PS720C1AA
ON-STATE WIDDERSTAND (MAX)	190 mOhms
MOUNTING TYPE	Surface Mount
FEUCHTIGKEIT SENSIBILITÉITNIVEAU (MSL)	1 (Unlimited)
LOAD CURRENT	1.25A
BLEIF FREE STATUS / ROHS STATUS	Lead free / RoHS Compliant
DETAILBESCHREIWUNG	Solid State Relay SPST-NO (1 Form A) 4-SOP (0.173", 4.40mm)
CIRCUIT	SPST-NO (1 Form A)

Verbonnen Tags

CEL (California Eastern Laboratories) PS720C-1A-A	PS720C-1A-A Distributeur	PS720C-1A-A Ubidder
PS720C-1A-A Präis	PS720C-1A-A Fotoen	PS720C-1A-A Bild
PS720C-1A-A PDF Dateblatt	PS720C-1A-A Luet Dateblatt	PS720C-1A-A Dateblatt
PS720C-1A-A Stock	Kaaft PS720C-1A-A	Kaaft CEL (California Eastern Laboratories) PS720C-1A-A
CEL (California Eastern Laboratories) PS720C-1A-A	CEL (California Eastern Laboratories) Ubidder	CEL (California Eastern Laboratories) Distributeur
CEL (California Eastern Laboratories) PS720C-1A-A	California Eastern Labs PS720C-1A-A	California Eastern Laboratories PS720C-1A-A
CEL PS720C-1A-A	CEL (California Eastern Laboratories) PS720C-1A-A	

Verbonnen Produkter

<p>PS7206-1A-A Produzenteuren: CEL (California Eastern Laboratories) Beschriewung: SSR RELAY SPST-NO 600MA 0-60V Op Lager: Out stock RFQ</p>	<p>PS7205B-1A-F3-A Produzenteuren: CEL (California Eastern Laboratories) Beschriewung: SSR RELAY SPST-NO 500MA 0-80V Op Lager: Out stock RFQ</p>
<p>PS7214-1A-E3-A Produzenteuren: CEL (California Eastern Laboratories) Beschriewung: SSR RELAY SPST-NO 400MA 0-100V Op Lager: Out stock RFQ</p>	<p>PS7214-1A-A Produzenteuren: CEL (California Eastern Laboratories) Beschriewung: SSR RELAY SPST-NO 400MA 0-100V Op Lager: Out stock RFQ</p>
<p>PS7206-1A-E3-A Produzenteuren: CEL (California Eastern Laboratories) Beschriewung: SSR RELAY SPST-NO 600MA 0-60V Op Lager: Out stock RFQ</p>	<p>PS7206-1A-F3 Produzenteuren: CEL (California Eastern Laboratories) Beschriewung: SSR RELAY SPST-NO 600MA 0-60V Op Lager: Out stock RFQ</p>
<p>PS7214-1A-F3 Produzenteuren: CEL (California Eastern Laboratories) Beschriewung: SSR RELAY SPST-NO 400MA 0-100V Op Lager: Out stock RFQ</p>	<p>PS720C-1A-F3-A Produzenteuren: CEL (California Eastern Laboratories) Beschriewung: SSR RELAY SPST-NO 1.25A 0-60V Op Lager: Out stock RFQ</p>
<p>PS7206-1A-F3-A Produzenteuren: CEL (California Eastern Laboratories) Beschriewung: SSR RELAY SPST-NO 600MA 0-60V Op Lager: Out stock RFQ</p>	<p>PS7214-1A Produzenteuren: CEL (California Eastern Laboratories) Beschriewung: SSR RELAY SPST-NO 400MA 0-100V Op Lager: Out stock RFQ</p>
<p>PS7211-2A-F3 Produzenteuren: CEL (California Eastern Laboratories) Beschriewung: SSR RELAY SPST-NO 100MA 0-100V Op Lager: Out stock RFQ</p>	<p>PS7206-1A Produzenteuren: CEL (California Eastern Laboratories) Beschriewung: SSR RELAY SPST-NO 600MA 0-60V Op Lager: Out stock RFQ</p>

