



CEL (California Eastern

PS7200N-1A-F3-A

Part Number:

PS7200N-1A-F3-A

Fabrikant / Brand:

CEL (California Eastern Laboratories)

Produkt beschreibung

SSR RELAY SPST-NO 250MA 0-40V

Datebanken:

 PS7200N-1A-F3-A.pdf

RoHS Status

 Bleif gratis / RoHS kompatibel

Ship From

Hong Kong

Shipment Way

DHL/Fedex/TNT/UPS/EMS

Laboratories)

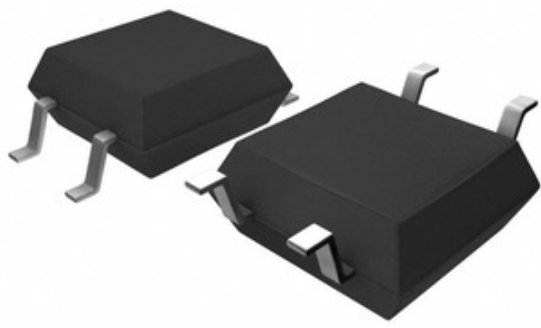




Bild kann Representatioun sinn. Kuckt Spezifikatioune fir Produktdetailer.

Spezifikatioune vun PS7200N-1A-F3-A

| | |
|--|---|
| PART NUMBER | PS7200N-1A-F3-A |
| HIERSTELLER | CEL (California Eastern Laboratories) |
| BESCHREIWUNG | SSR RELAY SPST-NO 250MA 0-40V |
| BLEIF FREE STATUS / ROHS STATUS | Bleif gratis / RoHS kompatibel |
| DATENLABEL |  PS7200N-1A-F3-A.pdf |
| VOLTAGE - LOAD | 0V ~ 40V |
| VOLTAGE - INPUT | 1.2VDC |
| TERMINATIOUNSTIL | Gull Wing |
| SUPPLIER DEVICE PACKAGE | 4-SOP (2.54mm) |
| SERIE | PS, OCMOS |
| VERPAKUNG | Tape & Reel (TR) |
| PACKAGE / CASE | 4-SOP (0.173", 4.40mm) |
| AUSGÄNGEGKEET | AC, DC |
| ON-STATE WIDDERSTAND (MAX) | 1.8 Ohms |
| MOUNTING TYPE | Surface Mount |
| FEUCHTIGKEIT SENSIBILITÉITNIVEAU (MSL) | 1 (Unlimited) |
| LOAD CURRENT | 250mA |
| BLEIF FREE STATUS / ROHS STATUS | Lead free / RoHS Compliant |
| DETAILBESCHREIWUNG | Solid State Relay SPST-NO (1 Form A) 4-SOP (0.173", 4.40mm) |
| CIRCUIT | SPST-NO (1 Form A) |

Verbonnen Tags

| | | |
|---|---|---|
| CEL (California Eastern Laboratories) PS7200N-1A-F3-A | PS7200N-1A-F3-A Distributeur | PS7200N-1A-F3-A Ubidder |
| PS7200N-1A-F3-A Präis | PS7200N-1A-F3-A Fotoen | PS7200N-1A-F3-A Bild |
| PS7200N-1A-F3-A PDF Dateblatt | PS7200N-1A-F3-A Luet Dateblatt | PS7200N-1A-F3-A Dateblatt |
| PS7200N-1A-F3-A Stock | Kaaft PS7200N-1A-F3-A | Kaaft CEL (California Eastern Laboratories) PS7200N-1A-F3-A |
| CEL (California Eastern Laboratories) PS7200N-1A-F3-A | CEL (California Eastern Laboratories) Ubidder | CEL (California Eastern Laboratories) Distributeur |
| CEL (California Eastern Laboratories) PS7200N-1A-F3-A | California Eastern Labs PS7200N-1A-F3-A | California Eastern Laboratories PS7200N-1A-F3-A |
| CEL PS7200N-1A-F3-A | CEL (California Eastern Laboratories) PS7200N-1A-F3-A | |

Verbonnen Produkter

| | |
|---|--|
|  <p>PS7200N-1A-M-A Produzentereuren: CEL (California Eastern Laboratories) Beschreibung: SSR RELAY SPST-NO 250MA 0-40V Op Lager: Out stock</p> <p>RFQ</p> |  <p>PS7200R-1A-F3 Produzentereuren: CEL (California Eastern Laboratories) Beschreibung: SSR RELAY SPST-NO 120MA 0-40V Op Lager: Out stock</p> <p>RFQ</p> |
|  <p>PS7200K-1A-A Produzentereuren: CEL (California Eastern Laboratories) Beschreibung: SSR RELAY SPST-NO 200MA 0-40V Op Lager: Out stock</p> <p>RFQ</p> |  <p>PS7200R-1A-A Produzentereuren: CEL (California Eastern Laboratories) Beschreibung: SSR RELAY SPST-NO 120MA 0-40V Op Lager: Out stock</p> <p>RFQ</p> |
|  <p>PS7200K-1A-E3-A Produzentereuren: CEL (California Eastern Laboratories) Beschreibung: SSR RELAY SPST-NO 200MA 0-40V Op Lager: Out stock</p> <p>RFQ</p> |  <p>PS7200N-1A-A Produzentereuren: CEL (California Eastern Laboratories) Beschreibung: SSR RELAY SPST-NO 250MA 0-40V Op Lager: Out stock</p> <p>RFQ</p> |
|  <p>PS7200R-1A Produzentereuren: CEL (California Eastern Laboratories) Beschreibung: SSR RELAY SPST-NO 120MA 0-40V Op Lager: Out stock</p> <p>RFQ</p> |  <p>PS7200R-1A-E3-A Produzentereuren: CEL (California Eastern Laboratories) Beschreibung: SSR RELAY SPST-NO 120MA 0-40V Op Lager: Out stock</p> <p>RFQ</p> |
|  <p>PS7200K-1A-F3 Produzentereuren: CEL (California Eastern Laboratories) Beschreibung: SSR RELAY SPST-NO 200MA 0-40V Op Lager: Out stock</p> <p>RFQ</p> |  <p>PS7200N-1A-F3-M-A Produzentereuren: CEL (California Eastern Laboratories) Beschreibung: SSR RELAY SPST-NO 250MA 0-40V Op Lager: Out stock</p> <p>RFQ</p> |
|  <p>PS7200K-1A-F3-A Produzentereuren: CEL (California Eastern Laboratories) Beschreibung: SSR RELAY SPST-NO 200MA 0-40V Op Lager: Out stock</p> <p>RFQ</p> |  <p>PS7200K-1A Produzentereuren: CEL (California Eastern Laboratories) Beschreibung: SSR RELAY SPST-NO 200MA 0-40V Op Lager: Out stock</p> <p>RFQ</p> |