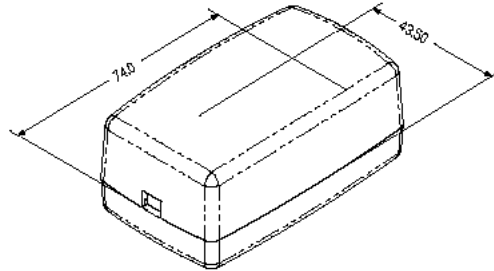
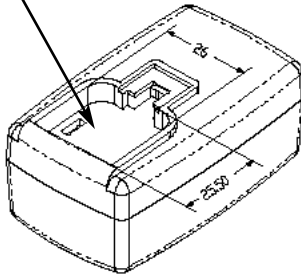


**PROPRIETARY INFORMATION:**  
 PROPRIETARY OF GLOBTEK, INC. ANY REPRODUCTION, DISCLOSURE OR USE OF THIS DRAWING, IN WHOLE OR IN PART, IS HEREBY PROHIBITED EXCEPT AS SPECIFIED IN WRITING BY GLOBTEK, INC.

REVISION			
REV	DESCRIPTION	DATE	APPROVED
A	INITIAL RELEASE, RFS.6842, DMR	08/11/05	DMR
B	ADD PACKING, ROHS, RFS. 11823, MS	08/22/07	HM
C	ADD CARTON SIZE PACKING, RFS. 12513, JS	11/26/07	HM
D	REVISE DESCRIPTION, I/P CONNECTOR, RFS. 18363, SO	03/30/10	HM
E	REVISE DESCRIPTION TO INCLUDE 'DUMMY GROUND', REV. 25704, BS	11/14/14	HM



STANDARD OPTION SHIPS WITHOUT AC PINS INSTALLED

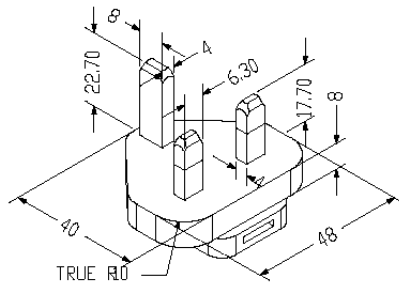


**1. MATERIAL**

HIGH IMPACT PLASTIC, 94V0 POLYCARBONATE, NON-VENTED, COLOR BLACK

**2. INPUT CONNECTOR:**

UK BS 1363 CONFIGURATION: UK 2 PINS + 'DUMMY GROUND', CLASS II



P/N: Q-UK(R)  
 UNITED KINGDOM  
 HONG KONG  
 SINGAPORE

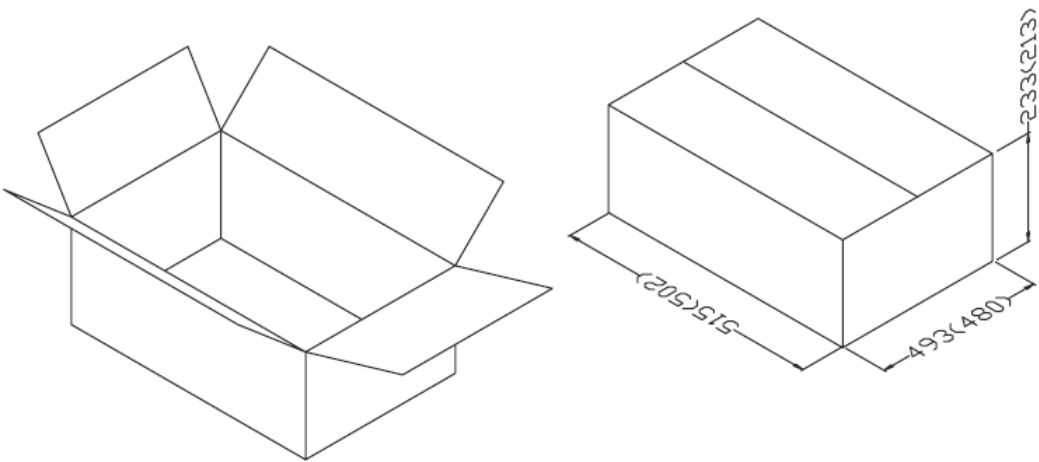
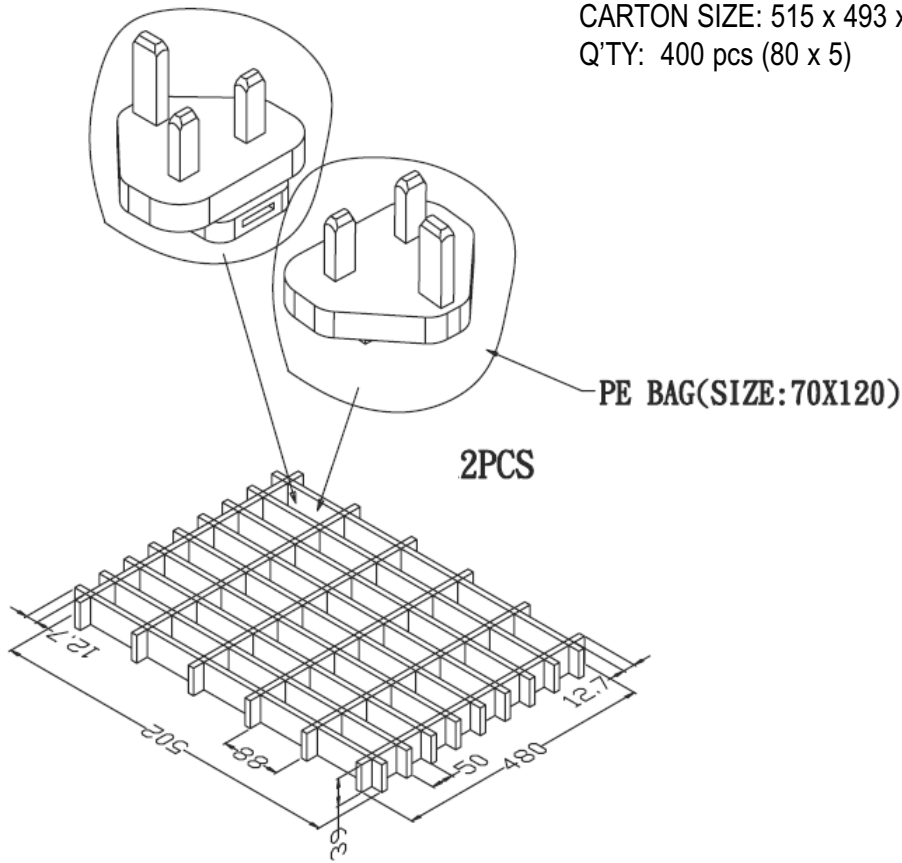
**RELEASED**  
 By N.Frost at 4:22 pm, Nov 17, 2014

Foot Note: Globtek Inc. will not be liable for the safety and performance of these power supplies if unauthorized access and repair occurs. End user should consult applicable UL, CSA or EN standards for proper installation instructions.	DASH NO.	PART NO	REV.	DESCRIPTION	NOTES	
	<b>TABULATION BLOCK</b>					
	INIT.BY: DMR		DATE: 08/11/05	TOLERANCES: DECIMALS .xx +/- 0.1 ANGULAR +/- 1' .xxx +/- .005	<b>186 Veterans Dr. Northvale, NJ 07647</b> <b>Tel. 201-784-1000 Fax 201.784.0111</b> <b>www.globtek.com</b>	
	DRAWN: NF		DATE: 08/11/05	MILLIMETERS .xx +/- 0.3 ANGULAR +/- 1' .xxx +/- .013		
APRVD : DMR	DATE: 08/11/05	FSCN No.: G, N	SIZE A	MODEL NO: N/A	REV. E	
		SCALE: NONE		PART NO: Q-UK(R)	SHEET 1 OF 2	

**PROPRIETARY INFORMATION:**  
 PROPRIETARY OF GLOBTEK, INC. ANY REPRODUCTION, DISCLOSURE OR  
 USE OF THIS DRAWING, IN WHOLE OR IN PART, IS HEREBY  
 PROHIBITED EXCEPT AS SPECIFIED IN WRITING BY GLOBTEK, INC.

**3. PACKING:**

CARTON SIZE: 515 x 493 x 233  
 Q'TY: 400 pcs (80 x 5)



 <b>GlobTek, Inc.</b> <a href="http://www.globtek.com">www.globtek.com</a>		186 Veterans Dr. Northvale, NJ 07647 Tel. 201-784-1000 Fax 201.784.0111	
DWG TITLE: UK INTERCHANGEABLE INPUT BLADES			
MODEL NO: N/A			REV. E
PART NO: Q-UK(R)			SHEET 2 OF 2