



BradCommunications™ SST™ PROFIBUS network interfaces provide high-performance control and the support required for your PROFIBUS applications.

SST™ PROFIBUS Interfaces

For Controlling and Monitoring PROFIBUS Applications

Features

- PCI bus format available with one and two channels
- Simultaneous execution of PROFIBUS DP Master, DP Slave and FDL (layer 2)
- Master Class 1 and Class 2 DPV1 support through Windows API
- Supports all standard baud rates: 9.6 Kbaud to 12 Mbaud
- Flash memory for storage of configuration
- Supports device configuration and diagnostics through FDT using commDTM
- Supports all PROFIBUS baud rates including 45.45 kbps
- Diagnostic LEDs for system status, watchdog timeout, and communications status

OS and Drivers Supported

- Windows NT4 / 2000 / XP drivers
- DP configuration software with enhanced diagnostics
- OPC Server v3.0
- Open, documented memory map interface with example C source code and Windows 32-bit DLLs for custom driver development

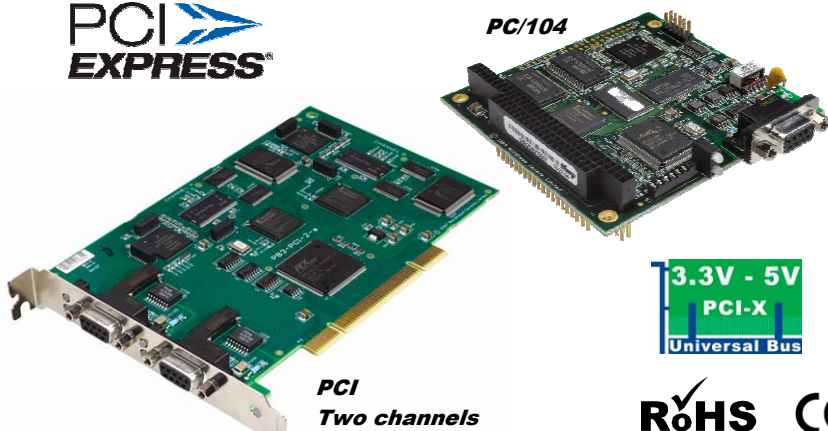
Related Products



BradConnectivity™ Diagnostic D-Sub Connector



PC/104



PCI Two channels



BradCommunications™ network interface cards are ideal for applications where high-performance control and reliability are required. Backed by superior support and service, BradCommunications network interfaces support a wide range of network protocols and bus formats.

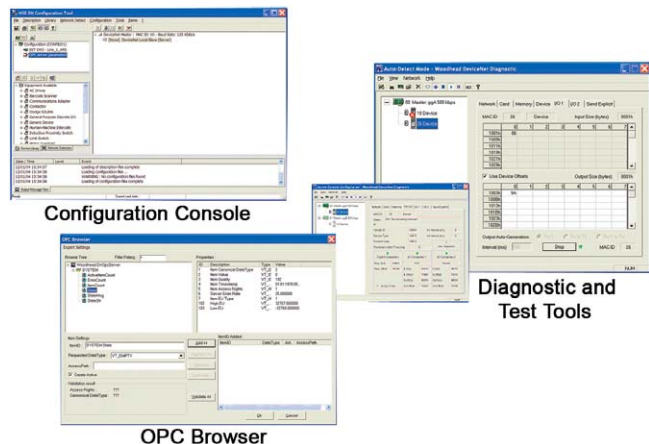
Overview

BradCommunications SST™ network interface cards for PROFIBUS can be found in many applications including:

- Operator interface
- Human-machine interface
- PC control
- Device development
- Network diagnostics

Software Tools

Software tools available for BradCommunications SST PROFIBUS network interface cards enable fast integration of industrial communications into your application.



Configuration Console

Diagnostic and Test Tools

OPC Browser



Network Specifications

| | |
|------------------|---|
| Protocol | <ul style="list-style-type: none"> PROFIBUS Master DP-V0, Class 1 and Class 2 PROFIBUS Slave DP-V0 PROFIBUS Master DP-V1, Class 1 and Class 2 FDL Layer 2 |
| Data Rate | <ul style="list-style-type: none"> All PROFIBUS data rates up to 12Mbps |
| Cable | <ul style="list-style-type: none"> Belden 3079A Brad Harrison® 85-0001 PVR2 conductor with shield, UL-listed |
| Connector | <ul style="list-style-type: none"> DB9 female connector per port/channel Brad Harrison Diagnostic D-Sub connector part number: MA9D01-42 |
| Isolation | <ul style="list-style-type: none"> 1000 V |

Hardware Specifications

| | PCI / PCI Express | ISA | PC/104 |
|------------------------------------|---|--|---|
| Bus Interface | PCI: Compliant with PCI 2.2 PCI Express: PCI Express 1x, rev 1.0a | Compliant with EISA Specification Version 3.12 | Compliant with PC/104 Specification Version 2.3 |
| Processor | ColdFIRE 5272 | | |
| Memory | One channel: 256K Window Two channel: 512K Window | Min. 8K Window in host memory map (max. 256K and default 16K) | Min. 8K Window in host memory map (max. 256K and default 16K) |
| Diagnostics | LEDs for system status and communications status | | |
| Interrupts | Hardware Plug & Play (32 Kbytes used per card) | Software selectable level IRQ 0 through 7 | |
| Dimensions (Length x Width) | 6.875 in x 4.2 in (17.463 cm x 10.668 cm) | 6.225 in x 4.2 in (15.812 cm x 10.668 cm) | 9.588 cm x 9.017 cm (3.775 in x 3.550 in) |
| Typical Current Draw | 600 mA | | |
| Voltage Requirements | 5V and 3.3V | 5V | |
| Resources | PCI Region 0=128 bytes PCI memory PCI Region 2=256K of 32-bit PCI memory (one channel) and 512K of 32-bit PCI memory (two channels) PCI Region 3=32 bytes of 32-bit PCI memory One PCI interrupt | ISA Memory Region = 256K of 16-bit ISA memory ISA I/O Region = 8 bytes of ISA I/O memory One ISA interrupt | PC/104 Memory Region = 256K of 16-bit PC/104 memory PC/104 I/O Region = 8 bytes of PC/104 I/O memory One PC/104 interrupt |
| Operating Temperature | 0°C (32°F) up to +60°C (140°F) | | |
| Storage Temperature | -40°C (-40°F) up to +85°C (185°F) | | |
| Humidity | 5% to 95% non-condensing | | |
| RoHS compliant | Yes | Yes | No |

Ordering Information

| Part Number | SAP | Product Description | Other Related Products |
|---|--|---|--|
| SST-PB3-PCU | 1120110020 | PROFIBUS card, Universal PCI bus, 3.3V/5V, PCI-X compatible | IP67 and IP20 I/O Gateways Cable Assemblies Diagnostic Tools Network Interfaces |
| SST-PB3-PCU-2 | 1120110022 | PROFIBUS card, Universal PCI bus, 3.3V/5V, PCI-X compatible, two channels | |
| SST-PB3-PCIE-2 | 1120110029 | PROFIBUS card, PCI Express, two channels | |
| SST-PB3-104 | 1120130012 | PROFIBUS card, PC/104 | |
| SST-PB3-ISA | 1120120004 | PROFIBUS card, ISA | |
| SST-PB3-CNF-P SST-PB3-CNF-U SST-PB3-OPC | 1120300008 1120300009 1120280030 | Configuration Console Application, parallel key Configuration Console Application, USB key OPC Server | |

To contact us: www.woodhead.com

Reference Number: DW200578 Date Published: January 2009

Brad[®]
from **molex**

North America: US: +1 800 225 7724 – Canada: +1 519 725 5136

Europe: France: +33 2 32 96 04 20 – Germany: +49 7252 94 96 0 – Italy: +39 010 59 30 77 – United: Kingdom +44 1495 356300

Asia: Shanghai, China: +86 21-5835-9885 - Tianjin, China: +86 22-23321717
Singapore: +65 6268-6868 – Yamato, Japan: +81 46-265-2428 – Nagoya, Japan: +81 52-221-5950

BradCommunications, BradConnectivity and SST are trademarks of Woodhead Industries.
© 2008 Molex Incorporated.