

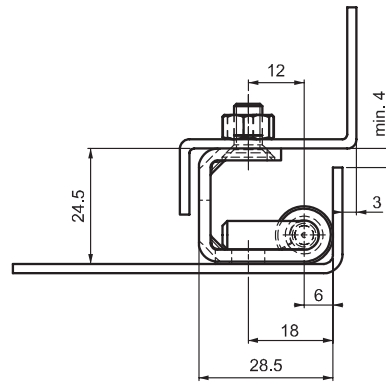
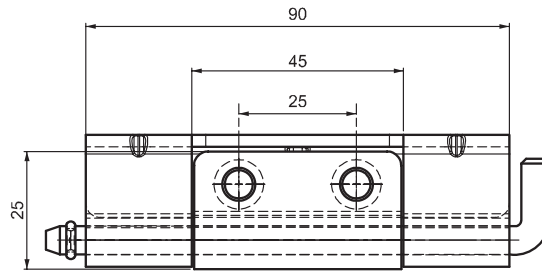
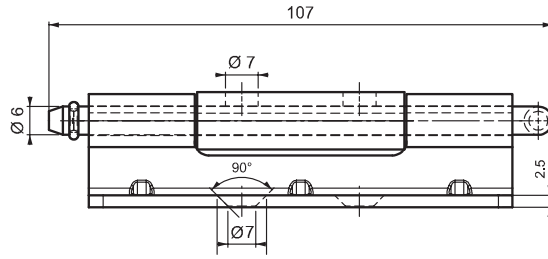
# CONCEALED HINGES

## CONCEALED HINGE

995



LH/RH



- **Stainless Steel version:** page: 459
- Side part can be mounted with M5 screws
- Centre part copper plated for easy welding
- Suitable for heavy-duty applications
- Suitable for 25 mm bend door cabinets

### APPLICATIONS

Electric panels, machinery covers

### MATERIAL

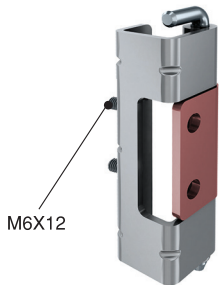
Steel

### FINISH

BODY: Zinc plated  
WELDING PART: Copper plated

**Note:** Bolts are not supplied

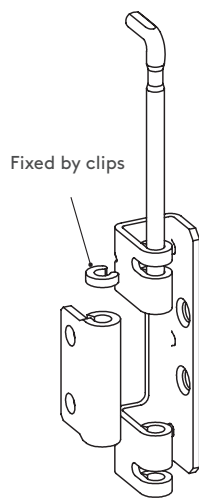
### Stud version



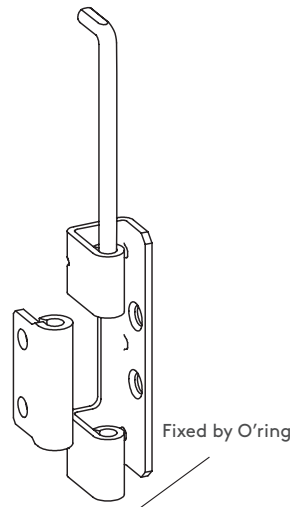
Hinge Rotation Angle



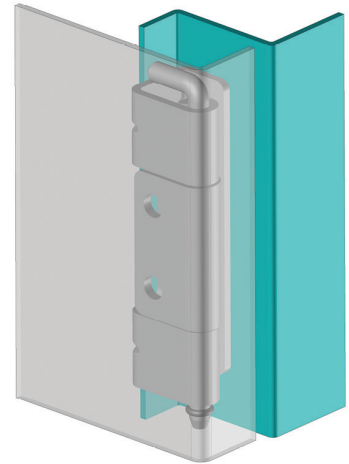
**Note:** Nuts are not supplied



V:4



V:3



### PRODUCT CODE

