

PCA-COM232 / PCA-COM485 4 Series Ports Expand Module Startup Manual

Packing List

Before you begin installing your card, please make sure that the following items have been shipped:

- PCA-COM232 / PCA-COM485 4 Series Ports Expand Module x1
- 2 year quality warranty card x 1 p/n:2190000902
- Startup manual x 1
- R/S D=5.5 H=2.0 +M M3*4L ST Zn X2 p/n:1935030430
- THREADED SPACER M3X0.5X7L HP-7 for LPC module X1 p/n: 1990015800S000
- F Cable 2*10P-2.0/D-SUB 9P (M)*2 22.5CM W/BKT X2 p/n: 1700008762

If any of these items are missing or damaged, please contact your distributor or sales representative immediately.

Specifications

Standard PC functions

This PCA-COM module expand 4 series ports by LPC connector on CPU card.

PCA-COM232 - 4 RS-232 series ports.

PCA-COM485 - 4 RS-422/485 series ports with Auto-flow control function.

Mechanical

- **Dimensions:** 31.5 mm x 48 mm

Connectors

PCA-COM232

Connectors

Label	Function
COM1	Serial Port: COM1 COM2
COM2	Serial Port: COM3 COM4

- COM1



Pin	Signal	Pin	Signal
1	DCD1	2	DSR1
3	RX1	4	RTS1
5	TX1	6	CTS1
7	DTR1	8	RI1
9	GND	10	GND
11	DCD2	12	DSR2
13	RX2	14	RTS2
15	TX2	16	CTS2
17	DTR2	18	RI2
19	GND	20	GND

For more information on this and other Advantech products, please visit our website at:

<http://www.advantech.com>

<http://www.advantech.com/eplatform>

For technical support and service, please visit our support website at:

<http://www.advantech.com.tw/support>

This manual is for the PCA-COM232-COM485 series.

Part No. 200K023200

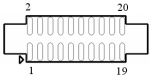
1st Edition

Printed in China

July 2009

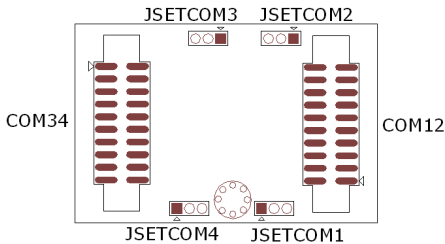
Connectors

- COM2



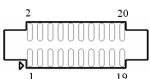
Pin	Signal	Pin	Signal
1	DCD3	2	DSR3
3	RX3	4	RTS3
5	TX3	6	CTS3
7	DTR3	8	RI3
9	GND	10	GND
11	DCD4	12	DSR4
13	RX4	14	RTS4
15	TX4	16	CTS4
17	DTR4	18	RI4
19	GND	20	GND

PCA-COM485



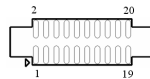
Connectors	
Label	Function
COM12	Serial Port: COM1 COM2
COM34	Serial Port: COM3 COM4

- COM12



Pin	Signal		Pin	Signal	
	RS422	RS485		RS422	RS485
1	COM1_ TXD-	COM1_ Data-	2	-	-
3	COM1_ TXD+	COM1_ Data+	4	-	-
5	COM1_ RXD+	-	6	-	-
7	COM1_ RXD-	-	8	-	-
9	GND	GND	10	GND	GND
11	COM2_ TXD-	COM2_ Data-	12	-	-
13	COM2_ TXD+	COM2_ Data+	14	-	-
15	COM2_ RXD+	-	16	-	-
17	COM2_ RXD-	-	18	-	-
19	GND	GND	20	GND	GND

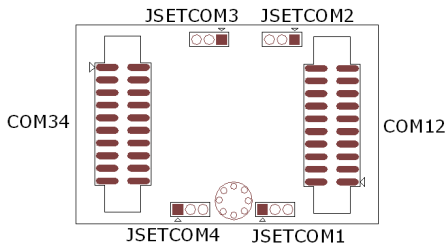
- COM34



Pin	Signal		Pin	Signal	
	RS422	RS485		RS422	RS485
1	COM3_ TXD-	COM3_ Data-	2	-	-
3	COM3_ TXD+	COM3_ Data+	4	-	-
5	COM3_ RXD+	-	6	-	-
7	COM3_ RXD-	-	8	-	-
9	GND	GND	10	GND	GND
11	COM4_ TXD-	COM4_ Data-	12	-	-
13	COM4_ TXD+	COM4_ Data+	14	-	-
15	COM4_ RXD+	-	16	-	-
17	COM4_ RXD-	-	18	-	-
19	GND	GND	20	GND	GND

Jumpers

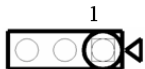
PCA-COM485-00A1E



Jumpers

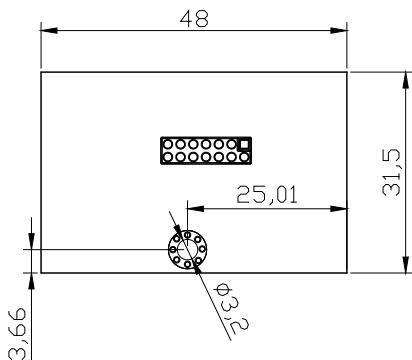
Label	Function
JSETCOM1	COM1 RS422/RS485 setting
JSETCOM2	COM2 RS422/RS485 setting
JSETCOM3	COM3 RS422/RS485 setting
JSETCOM4	COM4 RS422/RS485 setting

- JSETSOM1, 2, 3, 4



Jumper Setting	Function
1-2 Close	RS422 function
2-3 Close	RS485 function

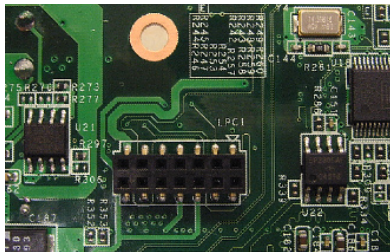
Board Dimension



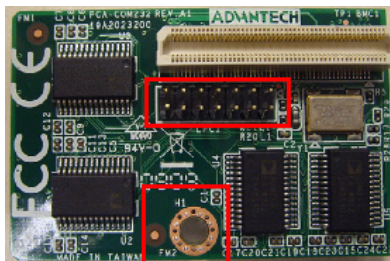
Installation Guide

Please connect to the CPU board LPC connector and fix by the steps as below:

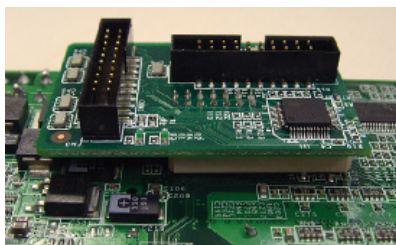
1. Find out the LPC connector on CPU board.



2. Find out the LPC1 connector on PCA-COM232 / PCA-COM485.



3. Connect PCA-COM232 / PCA-COM485 to CPU board.



4. Check the screw position of CPU board and PCA-COM232 / PCA-COM485, use threaded spacer and screw to fix.

