

C. Westby 5-13-92  
 APPROVED BY/DATE  
 9  
 REV

SAFETY ORGANIZATION(S)

THIS FILTER HAS BEEN FORMALLY RECOGNIZED, CERTIFIED OR APPROVED BY THE LISTED AGENCY. THEREFORE, ALL TEST/REQUIREMENTS SPECIFIED IN THE LATEST REVISION OF THE FOLLOWING AGENCY STANDARDS HAVE BEEN MET.

- UL RECOGNIZED
- UL 544
- CSA 22.2, NO. 0, 0, 4, 8
- VDE APPROVED
- SEV 565-3, 625
- SEV APPROVED
- SEV 1055/TP1977/5.1.1

OPERATING SPECIFICATIONS:

- LINE VOLTAGE/CURRENT:
- 6 AMP., 120/250 VAC
- 6 AMP./40°C, 250 VAC
- 50-60HZ
- 40°C
- LINE FREQUENCY:
- MAX. CASE RISE  $\theta$  RATED CURRENT:
- MAX. LEAKAGE CURRENT, EACH LINE TO GROUND
- OPERATING AMBIENT TEMP. RANGE:
- 10°C TO +40°C  $\theta$  RATED CURRENT,  $I_r$

IN AN AMBIENT,  $T_a$ , HIGHER THAN 40°C, THE MAXIMUM OPERATING CURRENT,  $I_o$ , IS AS FOLLOWS:

$$I_o = I_r \sqrt{\frac{85 - T_a}{45}}$$

RELIABILITY SPECIFICATIONS:

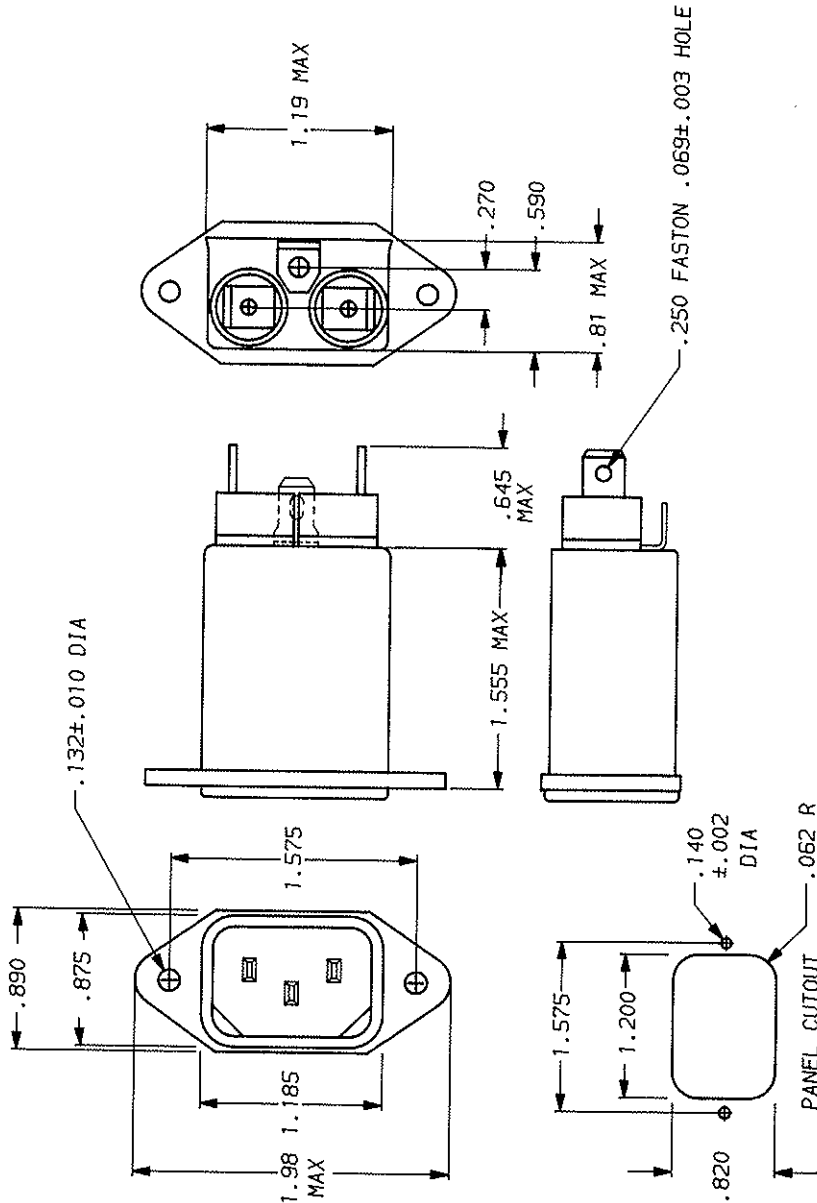
- STORAGE TEMPERATURE:
- 40°C TO +85°C
- HUMIDITY:
- 21 DAYS @ 40°C 95% RH
- CURRENT OVERLOAD TEST:
- 6 TIMES RATED CURRENT FOR 8 SECONDS

TEST SPECIFICATIONS:

- INDUCTANCE:
- .465 mH NOMINAL
- CAPACITANCE, (MEASURED @ 1 KHZ, 0.25 VAC MAX., 25°C  $\pm$ 1°C)
- .01  $\mu$ F  $\pm$ 20%
- 1.5 Ma
- DISCHARGE RESISTOR:
- 6000 Ohm OHM AT 100 VDC
- LINE/GROUND AND LINE/LINE
- INSULATION RESISTANCE
- (W/O DISCHARGE RESISTOR)
- RECOMMENDED RECEIVING INSPECTION HIPOUT.
- LINES TO GROUND:
- 2250 VDC FOR 1 MINUTE
- LINE TO LINE:
- 1450 VDC FOR 1 MINUTE

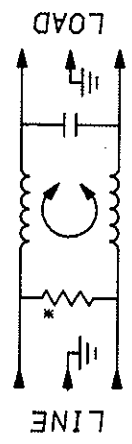
FILTER APPROVAL:

THE BEST WAY TO SELECT AND QUALIFY A FILTER IS FOR YOUR ENGINEERING TO TEST THE UNIT IN YOUR EQUIPMENT.



FREQUENCY MHz	50 $\mu$ - 50 $\mu$ (MINIMUM) INSERTION LOSS					
	15	5	1.0	5.0	10	30
COMMON	9	16	20	26	23	20 18

This document is proprietary to CORCOM INC. and is not to be reproduced nor used for manufacturing purposes except on CORCOM'S order or prior written consent.



TOLERANCE  $\pm$ .005  
 FRONT MOUNT

**CORCOM**  
 LIBERTYVILLE, IL 60048

POWER LINE FILTER

SALE DATE: NTS 9-12-89  
 PART NO.: 6EH4.09  
 TDL: CW

\*RESISTOR ADDED TO PRODUCT BUILT AFTER 3-30-92 (9212).